



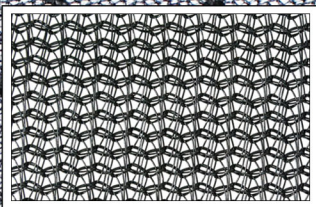
# HEAVY DUTY DEBRIS NET

HDN SERIES

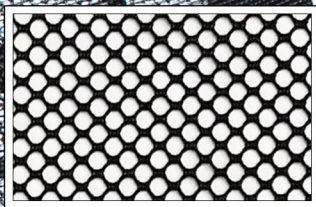


## CONSTRUCTION DEBRIS CONTAINMENT

- High tenacity knotless polypropylene net
- Base net varies from approx. a 2" or 2.5" square mesh
- Debris liner options: 1/16" or 1/4" mesh
- Load rating options:
  - 2,000 lb. (w/ perimeter webbing & grommets)
  - 5,000 lb. (w/ perimeter webbing & grommets)
  - 10,000 lb. (w/ stronger perimeter rope border)
- Extra UV inhibitors for added life expectancy



1/16" DEBRIS LINER



1/4" DEBRIS LINER

\*Load ratings are calculated using a dynamic load measured in foot-pounds.  
Please see Eagle's spec. sheet for more information.





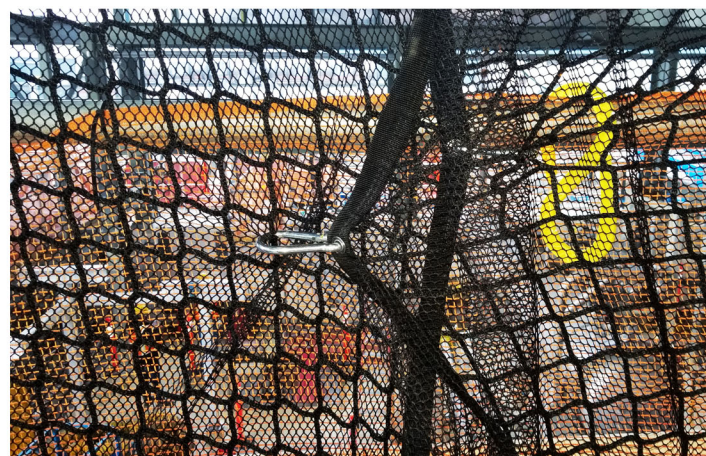
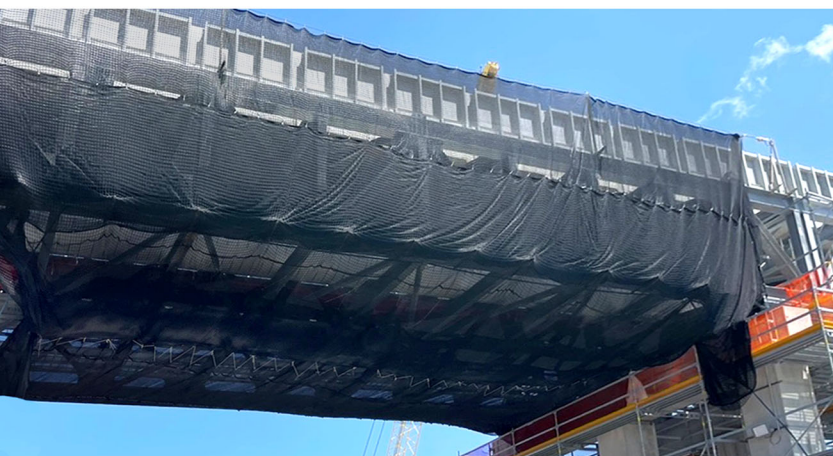
## APPLICATIONS & BENEFITS

- Protects small & chunk debris from falling during construction & demolition
- Prevents tools from falling at heights
- Protects pedestrians & adjacent properties
- Heavy duty, abrasion resistant netting
- All nets are tested & approved
- Meets OSHA debris protection regulations
- Flame retardant nets available & made to order

### HDN SERIES

NET RATING	COLOR	BASE NET	LINER	ITEM #	PACKAGING
2,000 LB.	BLACK, GRAY, TAN	2" NET*	1/16" OR 1/4"	HDN-2000	1 EACH
5,000 LB.	BLACK, GRAY, TAN	2.5" NET*	1/16" OR 1/4"	HDN-5000	1 EACH
10,000 LB.	BLACK, GRAY, TAN	2.5" NET*	1/16" OR 1/4"	HDN-10000	1 EACH

Flame retardant nets available & made to order.



Please note: All product information is provided as a general guide and not a specification limit. Eagle Industries of Louisiana, LLC disclaims liability for improper use or installation; always consult an engineer and check local building codes. For complete details, please see our full disclaimer at <https://www.eagleind.com/disclaimers/>.

\*Approximate sizing: mesh opening description is nominal